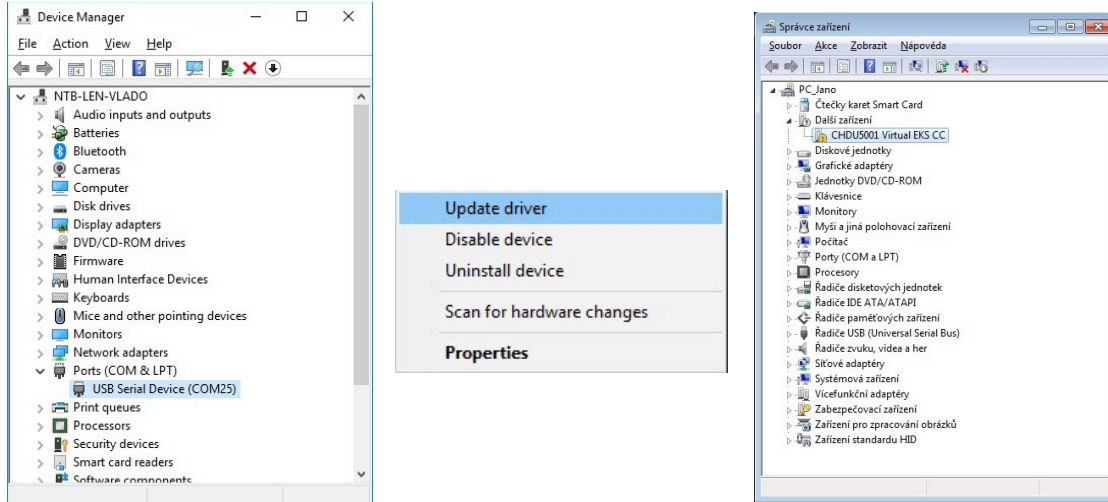
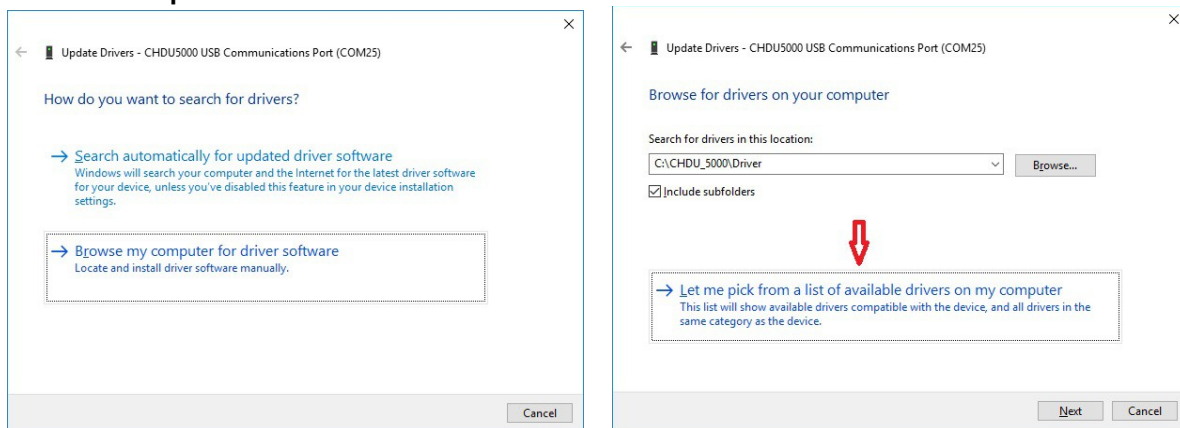


Driver Installation.

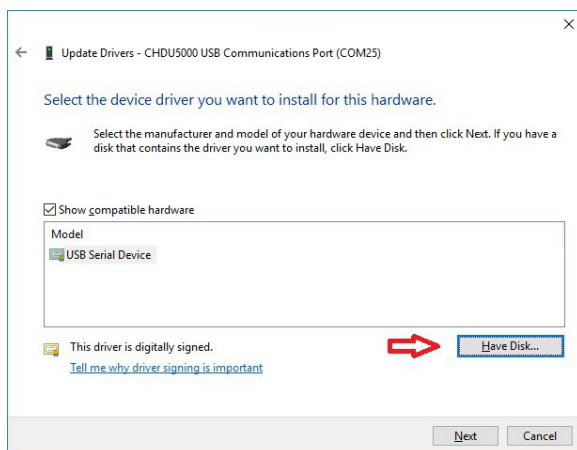
1. Open the **Device Manager**. Type “Device Manager” in the start menu.



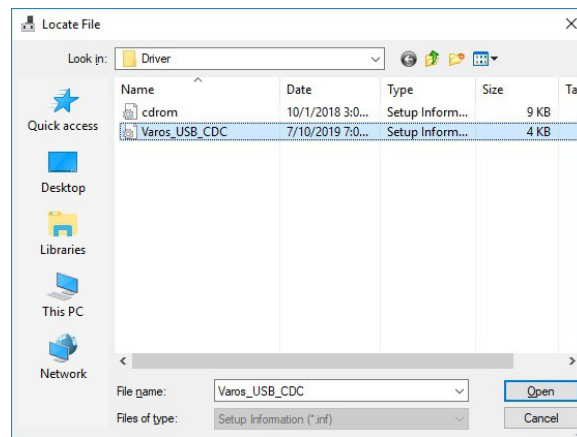
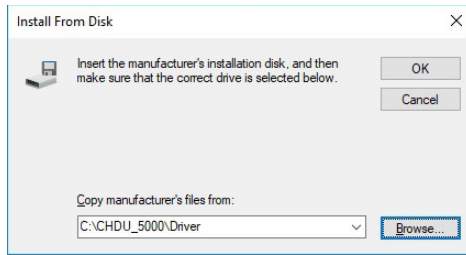
2. Right click the unknown device (“CHDU5001 Virtual EKS CC or USB Serial Device”), and select **Update Driver Software**.



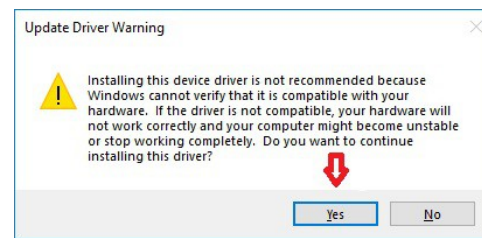
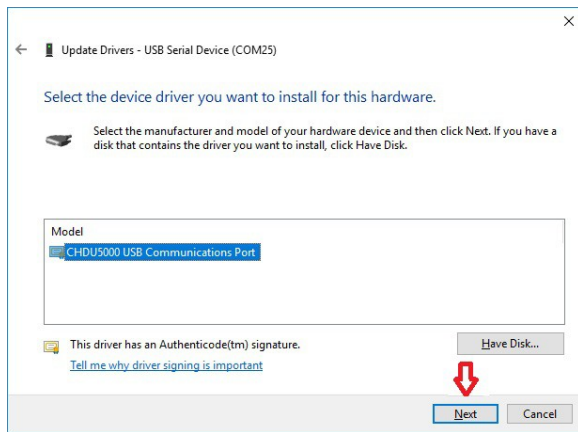
3. Click **Browse my computer for driver software**.
4. Click **Let me pick from a list of device drivers on my computer**.
5. Click **Next**



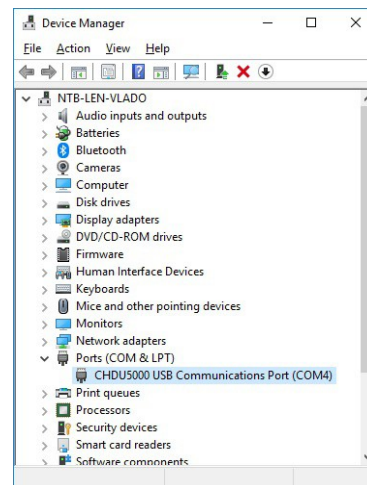
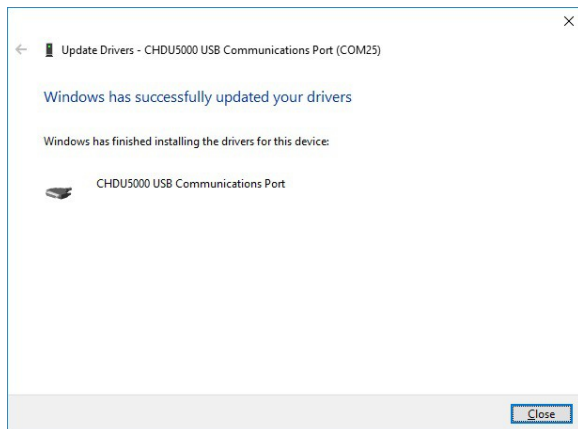
6. Click **Have Disk**.



7. **Browse** to folder with driver file
8. Select driver file, click **Open**
9. Click **OK**.



10. Click **Next**.



11. Driver is successfully installed.

